

Weather/Wind Forecasting Websites:

There are a variety of different wind forecasting models. Some are more conservative than others. Some websites use only one model and show only the averages, and not the wind range. It's the gusts that you should be most concerned with. For a good explanation of each model, check out this video: <https://www.youtube.com/watch?v=IDNK3iKMu9k>

When checking weather conditions, consider the following:

- Who is in your crew? Beginners? Younger kids? Experienced?
- Basic weather sites to review (See below for more detail):
 - BKB Kiteboarding.
 - Look at the Post Point Webcam. Sometimes the conditions look mild so the view can be deceiving.
 - North Sound Forecast (NOAA). This comes out twice a day (~830am and 3:00pm) and will give the general wind forecast. Pay special attention to any warnings- Small Craft or Gale Force. I never go out when a Gale Force is in effect; while conditions may only be about 10-15knots, gale force winds may occur suddenly.
 - Links to Ikitesurf. This will give you current wind. Forecasts are good, but you would need a Plus membership to get the better forecast. See link below for information about wind models
 - If there is a small craft warning, take a look at TJ Olney's model.
 - Tides. Sometimes with an outgoing tide, wind from 10-20 can create some pretty big waves.
 - Webcam at the CBC boat launch:
<https://live7.brownrice.com/embed/bellingham2>
 - Weather.Gov
 - Check this for general precipitation and potential thunderstorm timing.
- BKB Kiteboarding <http://www.bellinghamkiteboarding.com/wind.php>
 - Post Point Webcam. Also available via the Community Boating Center website.
 - We usually check the Locust beach sites (now Locust beach west and Bellingham). Note that if you click on the graph, it takes you to Ikitesurf. From there you can click on a variety of different sensors around the area. Check out the forecast (Blend) to see what is predicted. Sometimes it is spot on, but first check current conditions against the forecast. If it's already above the forecast, and predicted to get windier, then that is likely the trend.
 - Look at the Smith island graph site, as this can show what is coming in from the south.
 - Look at the North Sound forecast (NOAA) on the BKB site. Not always accurate, but if it calls for Gale force winds, that means that winds can come up suddenly at any time. I'm really cautious if I see this forecast.

- This website also has the tides. If you click on the tide graph on the bottom of the page you can also find tide predictions for different dates.
 - Bellingham tides: <http://www.dairiki.org/tides/daily.php/bel>
- Check out TJ's Weather Forecast Map (See below).
 - On the right you can click on the time frame that you are interested in.
 - For Bellingham Bay, you can see the outline of the bay on the left
 - For Lake Whatcom, we believe the area is shown in the circle below.
 - Sometimes the focused model doesn't show all of the time (make sure you clear the times, usually you can see forecast winds from 8am-8pm). For some reason, the large area forecast map will update and you can see the projection by hour (but you will need to focus in closer)
 -
- Wind notes:
 - Lake Padden, is pretty protected in N/NE winds.
 - Lake Whatcom: With very big winds (over 35mph), some people will do a downwinder from the south end of the lake at the North shore trailhead (needs to be a SE wind)
 - Lake Whatcom: With W/SW winds, keep to the right, and come back the same way. You can keep out of the strongest of the winds by following the shoreline (usually).

10 Meter Winds

Valid 1700 PDT (0000Z) TUE 9 Jul 2019 [18hrFcst@0921z]

1.3km BLANCHARD RASP DrJack WRF/ARW NAM NOAA Operated by TJ Olney PG pilot

RASP
Model Run for
Jul 09 2019

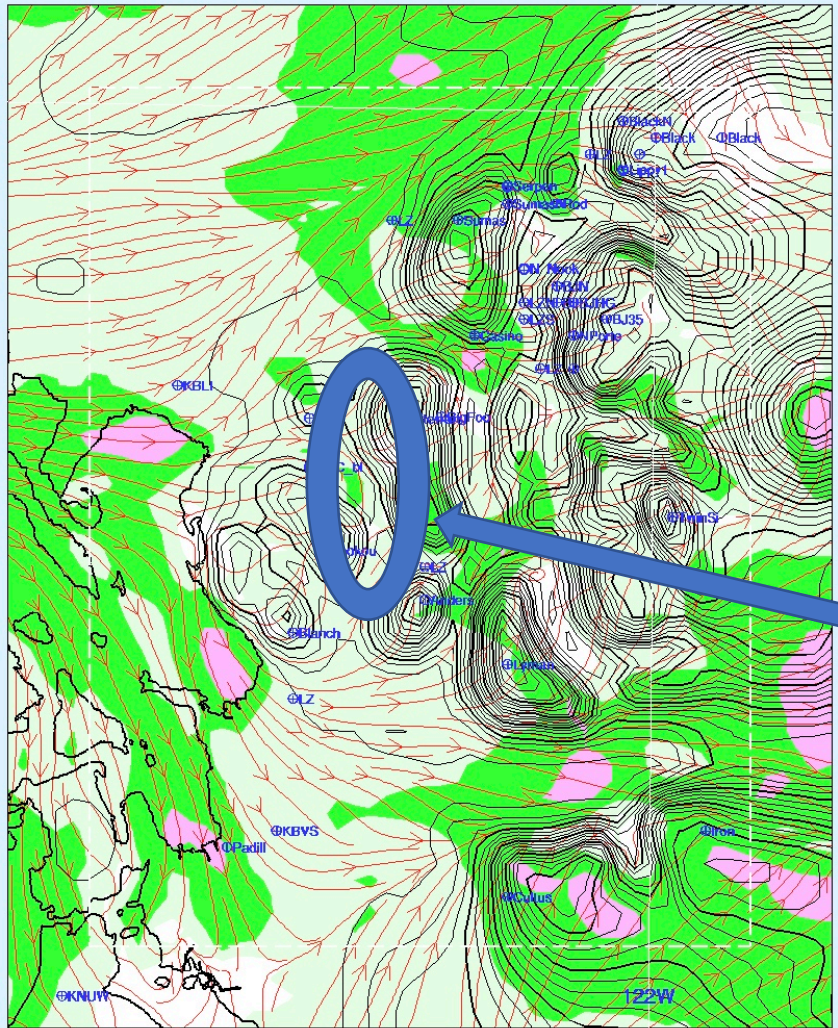
Plotted at
02:23 PDT
WRF/ARW
NAM initiated
Using Data
from 06z
with
NOAH SFC

Operator
TJ Olney

[http://
wxtofly.net/](http://wxtofly.net/)

plotted
02:23 PDT
TJ Olney

[kt]



Fixed
Color

Pacific
NorthWest
RASP

Forecast
Updated
Several
Times
Daily

Fly
Safely

URL=
wxtofly.net

Lake
Whatcom

- Bellingham sunrise, sunset, twilight, etc:
<https://www.sunrisesunset.com/USA/Washington/Bellingham.asp>
- NOAA weather: www.weather.gov
 - Click on the graphs for more detailed information. Not so accurate for wind, but I like to look at this to see rain/snow/ice accumulation predictions.
 - This also shows if thunderstorms are predicted.
- NWS NWIC buoy (not sure when this will be online again)
http://nvs.nanoos.org/Explorer?action=oiw:fixed_platform:NWIC_Bellinghambay:history
 - This buoy is in the middle of Bellingham bay, but not uploaded regularly.
- Check the Canadian radar: https://weather.gc.ca/radar/index_e.html?id=WUJ
 - I check this one if I'm unsure of where the storm is coming from- this one broadens the search.
- KOMO interactive radar: <https://komonews.com/weather/radar>
 - Selecting the future scenario with precipitation can give you a general idea when the rain will arrive.
- Community Boating Center Post Point Buoy Webcam:
<http://www.boatingcenter.org/post-point-web-camera/>
Sometimes the view gets skewed due to wind pushing the camera.
- Weather underground: www.wunderground.com
 - Don't use this for wind. It only shows the averages and the gusts are the most concerning.
- www.ventusky.com: Thanks to Paul R. This is a graphical presentation of the wind, and you can select different times to look at wind
- <https://www.windy.com> You can check out the forecast for wind and other weather elements.